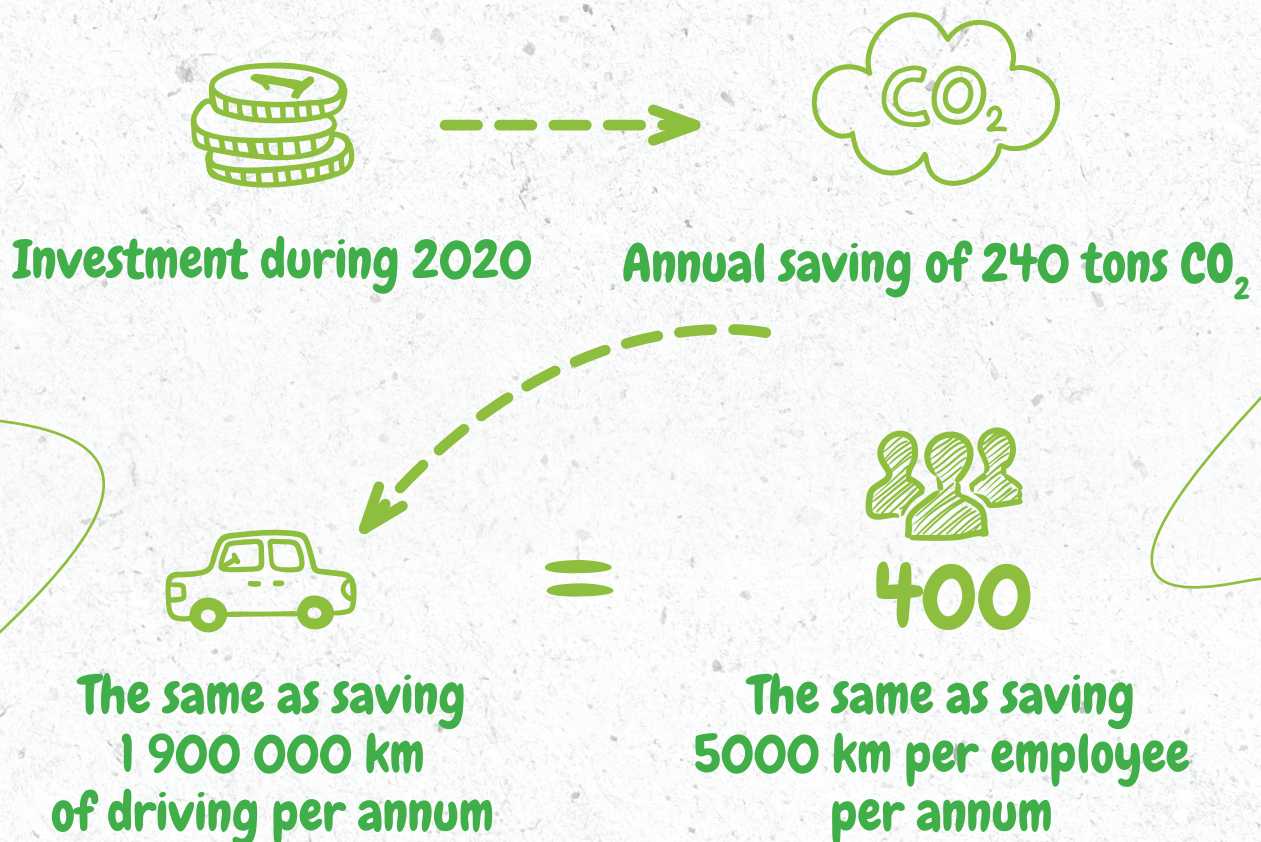


## Ecology in the company

Throughout the entire company we adhere to the principle of eco-friendly operation. Thanks to investment in the manufacturing process in 2020, we have been able to reduce the annual production of CO<sub>2</sub> by approximately 240 tonnes. That amount is equivalent to, for example, 1 900 000 km covered by a petrol-driven vehicle. The load on the planet would similarly be reduced if every one of our employees travelled 5 000 km less by car each year.



## Production facilities

The entire production facility is subject to continuous innovation. The main aspects of this are efficiency, environmental friendliness and maintaining a healthy environment. Examples of reducing energy consumption include heat recovery from exhaust air using recuperation units, gradual transition to LED lighting, strengthening the thermal insulation capabilities of flat roofs, along with window replacement, and decentralization of the heating system. Thanks to investment, unwanted heat leakage is reduced to a minimum and the production of the energy needed to produce heat is also made more efficient.



# Ecology in production

## Input

Almost all (99%) of the plastic parts we use are made from Polypropylene, which is recyclable. In our products, we avoid materials that are not ecologically friendly, or are harmful. All of our inks for children are certified and are 100% safe and healthy for children to use.

## Processing

We can be proud of the waste-free production of plastic parts, because we process all the waste from production. At each production stage, technologies are introduced to reduce the volume of waste and to prevent pollution. We encourage every employee to save energy. New plastic presses from renowned companies reduce energy consumption by 30 to 50% thanks to having a continuously variable output.

## Output

In packaging materials, we are replacing PVC which is no longer suitable today, with recyclable polypropylene and paper, and we consistently recycle waste which is not directly generated by production. The entire production process is located in one place, from raw material input, through manufacturing, quality control and packaging, to warehousing, and finally shipping to customers, all of which significantly contribute to minimizing our environmental impact.

